

lounge

Protagonisti di stile.





lounge

Protagonisti di stile.



*Colore e musica il sottofondo
luminoso delle nostre sensazioni*

Lounge tinta 998

Applicazione con pennello "spalter"
Brush spalter effect




I colori della cartella sono indicativi e possono subire variazioni. Per ulteriori informazioni consultare la scheda tecnica.
These hues are for reference only. For further information please read data sheet.

The image features two vintage microphones against a solid purple background. The microphone on the left is a classic ribbon microphone with a complex, curved grille. The microphone on the right is a dynamic microphone with a more straightforward, rectangular grille. Both are highly reflective, showing highlights and shadows that emphasize their metallic texture. The word "lounge" is printed in a clean, white, sans-serif font across the center of the image, overlapping both microphones.

lounge

Protagonisti di stile.



*Colori e suoni riflettono
l'energia degli ambienti*

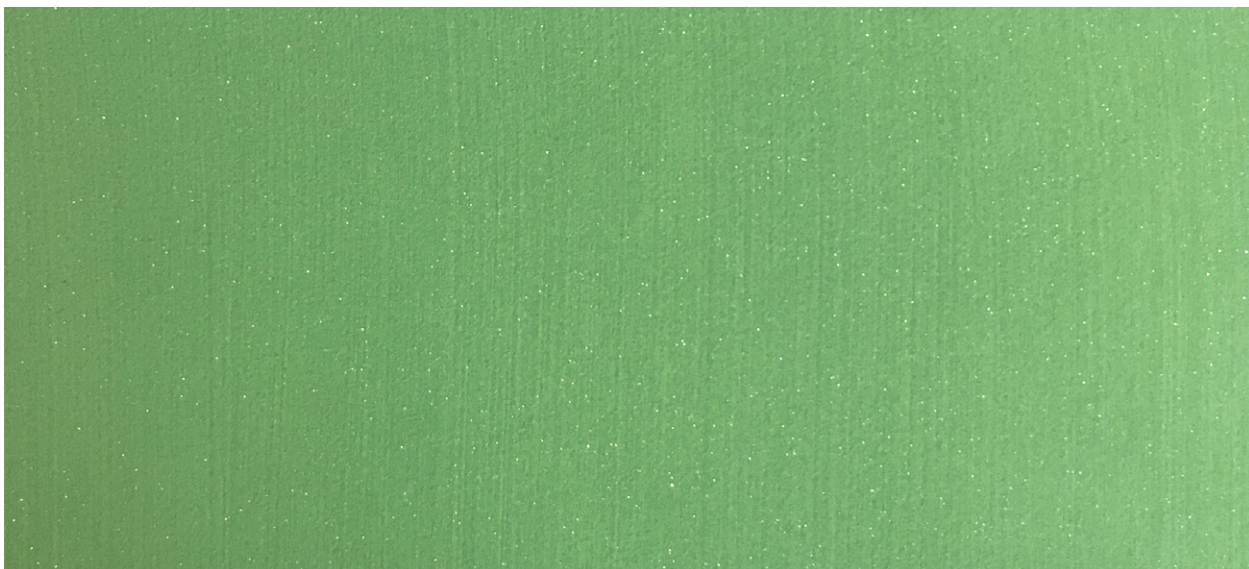
Applicazione effetto tramato
Woven effect

Lounge Tinta L041



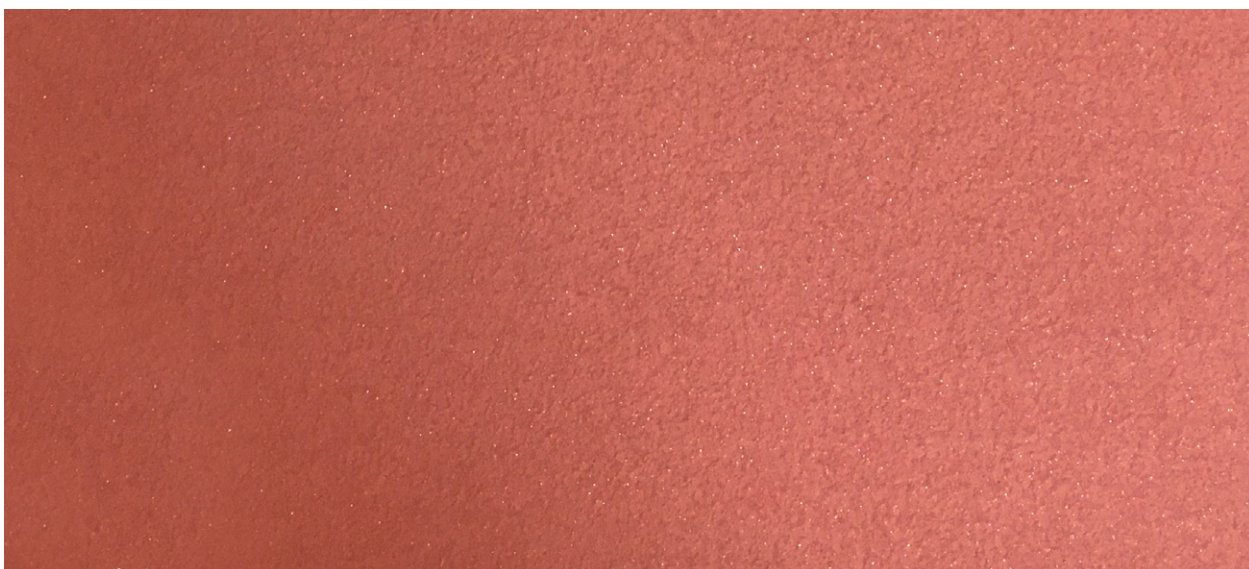
Applicazione effetto rigato
Striped effect

Lounge Tinta L042



Applicazione a rullo
Roller effect

Lounge Tinta L043



I colori della cartella sono indicativi e possono subire variazioni. Per ulteriori informazioni consultare la scheda tecnica.
These hues are for reference only. For further information please read data sheet.

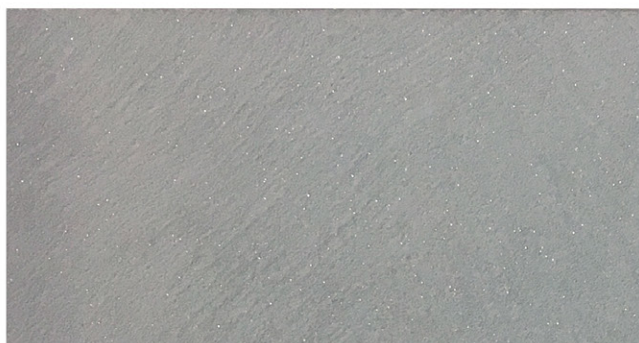
LOUNGE - Protagonisti di stile



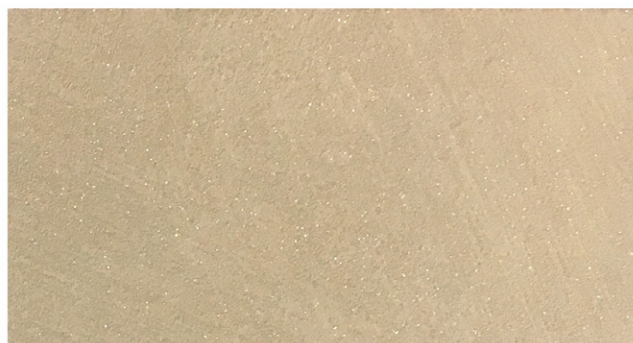
codice L001



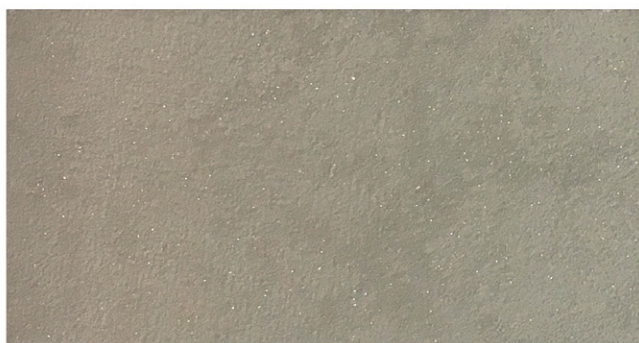
codice L002



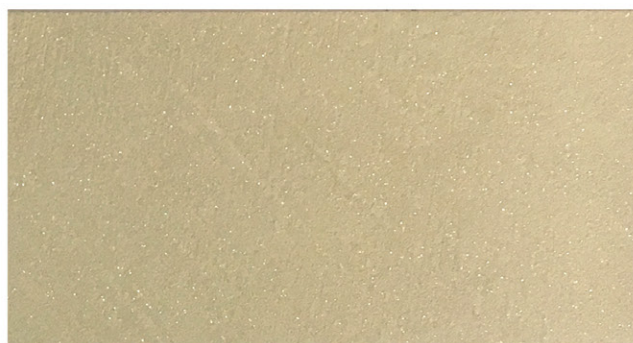
codice L003



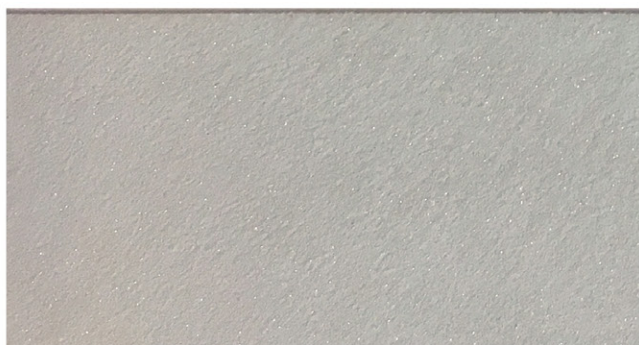
codice L004



codice L005



codice L006



codice L007



codice L008



codice L009



codice L010



codice L011



codice L012



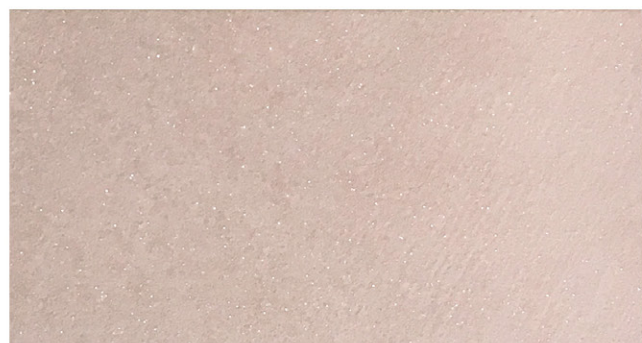
codice L013



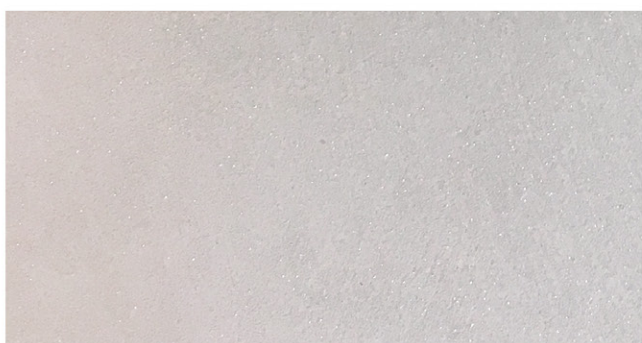
codice L014



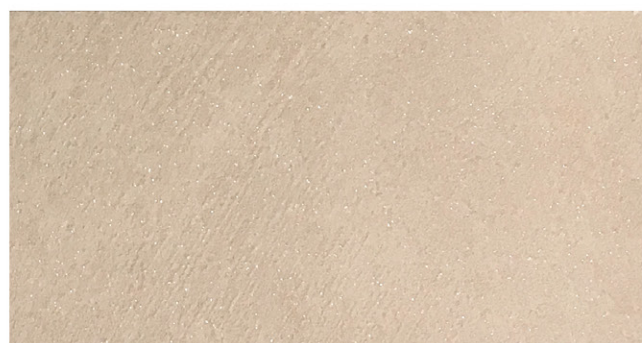
codice L015



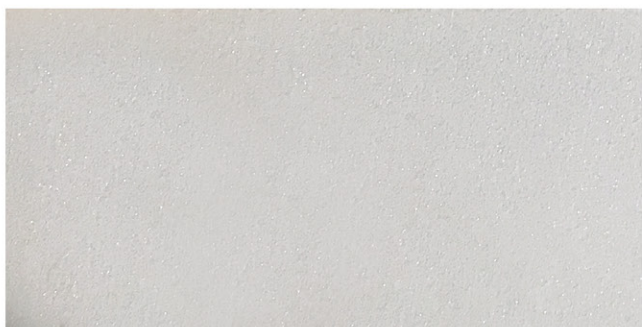
codice L016



codice L017



codice L018



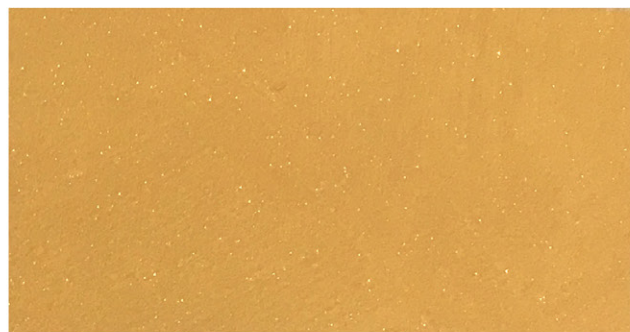
codice L019



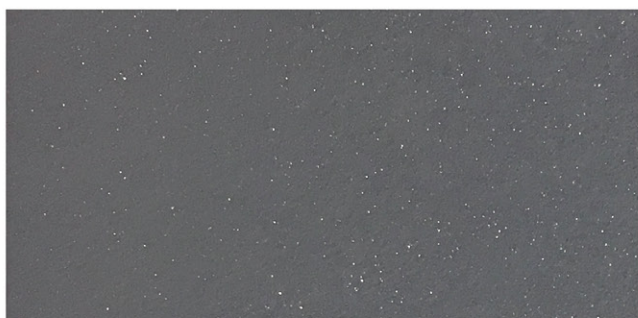
codice L020



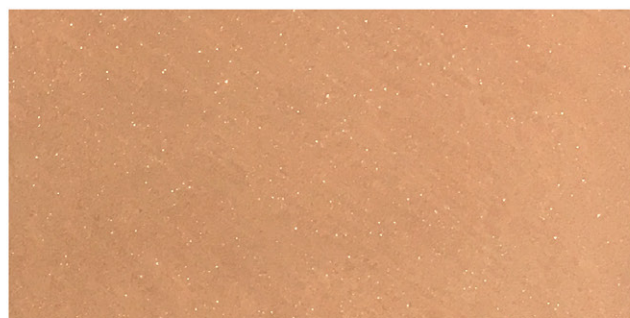
codice L021



codice L022



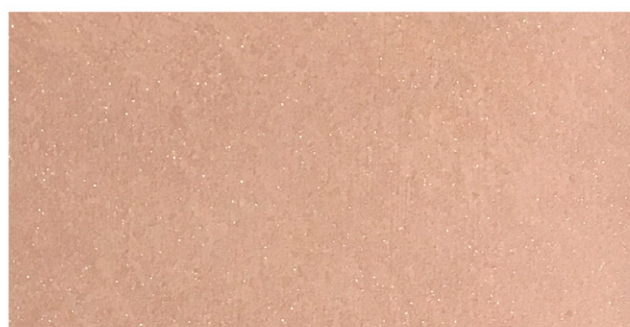
codice L023



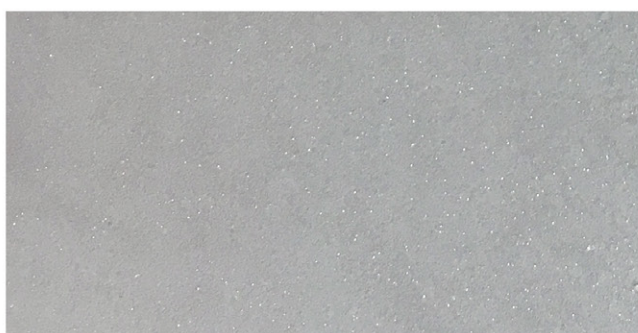
codice L024



codice L025



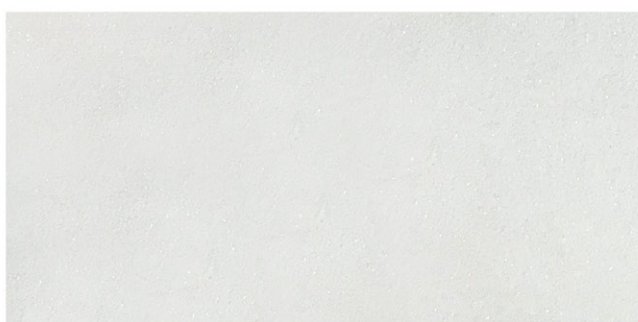
codice L026



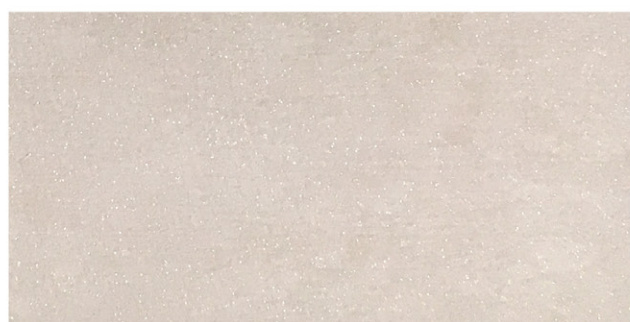
codice L027



codice L028



codice L029

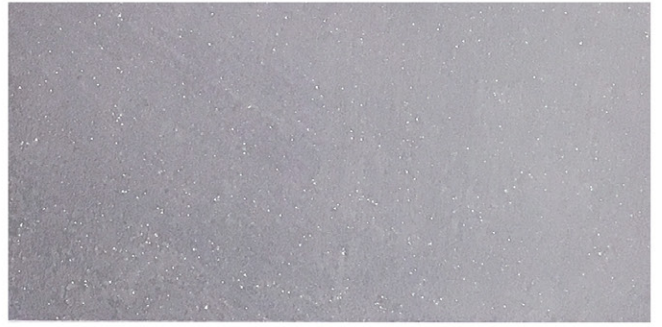


codice L030

LOUNGE - Protagonisti di stile



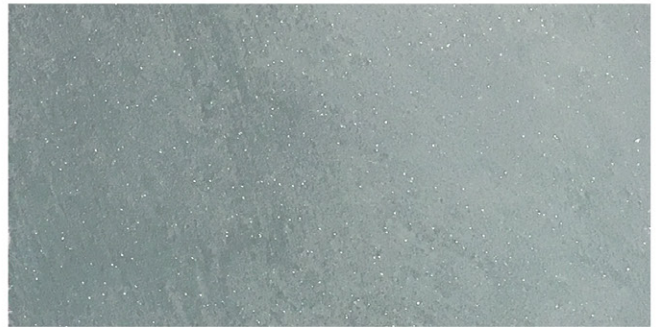
codice L031



codice L032



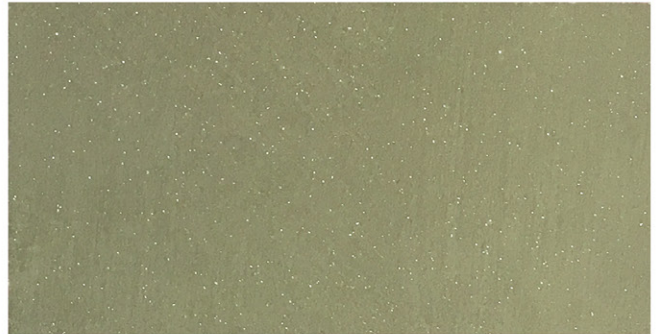
codice L033



codice L034



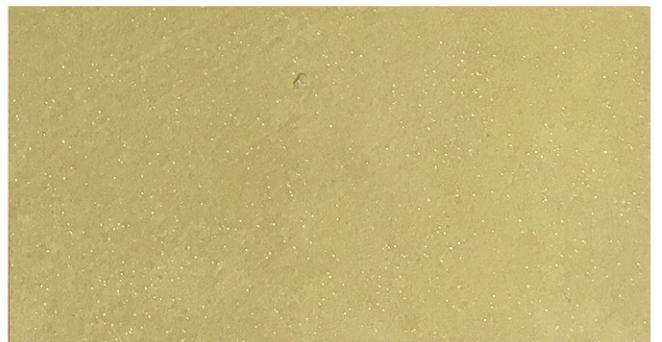
codice L035



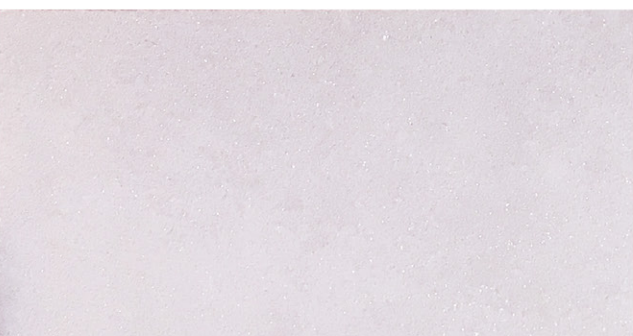
codice L036



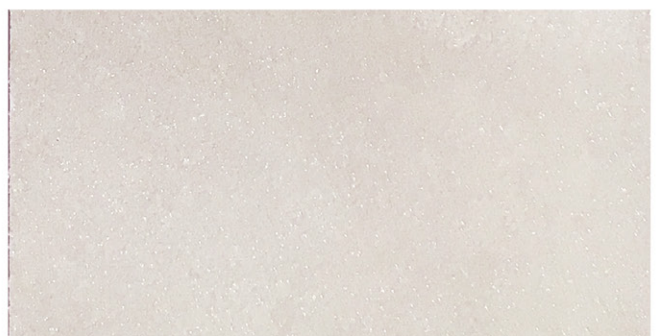
codice L037



codice L038



codice L039



codice L040

Finitura ad acqua ad effetto decorativo per interni, di facile applicazione, dotata di eccellente adesione e resistenza ai graffi e all'usura. Consente di ottenere un' elegante finitura ad effetto delicatamente perlato e luminoso. Lounge riflette qualsiasi forma di luce. Idoneo per qualsiasi tipo di ambientazione.

Ciclo applicativo

FASE 1) PREPARAZIONE SUPPORTO:

Al fine di ottenere risultati ottimali è necessario spazzolare le superfici ed applicare una mano di **Fissativo 1000 Cod.4050** diluito max 1:10 o **Fissativo Acrilico Consolidante Cod. 4060** diluito max 1:1.. Su supporti diversi (ferro-plastiche-leghe ecc) applicare una mano preliminare di **Primer Tech Cod. 8600**.

FASE 2) APPLICAZIONE DECOBASE:

Diluire max al 10% con acqua potabile. Applicare una mano con un rullo a pelo corto o pennello.

Resa 9-10 mq/l per mano.

Sovraverniciabile dopo 4-6 ore.

FASE 3) APPLICAZIONE LOUNGE:

Il prodotto va diluito max al 5% e può essere applicato con diversi attrezzi: pennello spalter rullo a pelo corto, come da indicazioni su scheda tecnica. Dopo 6-8 h applicare la seconda mano di prodotto con la stessa metodologia della prima.

Schema dati tecnici

Prodotto	Utilizzo	Diluizione con acqua	Resa	Attrezzi	Sovraverniciatura	Colori	Confezioni
PREPARAZIONE DEL SUPPORTO FASE 1							
FISSATIVO 1000	INTERNI	1:10	10-20 m ² lt	pennello	4-6 h	lattiginoso (incolore dopo l'applicazione)	1 - 5 - 20 L
OPPURE							
FISSATIVO ACRILICO CONSOLIDANTE	INTERNI - ESTERNI	1:1	8-12 m ² lt	pennello	8-12 h	lattiginoso (incolore dopo l'applicazione)	1 - 5 - 20 L
OPPURE							
PRIMER TECH	supporti diversi (ferro plastiche e leghe)	max 5%	11-13 m ² lt	pennello rullo	24 h	bianco-grigio	2,5 - 0,500 L
PREPARAZIONE DEL SUPPORTO FASE 2							
DECOBASE	INTERNI	max 10%	9-10 m ² lt	pennello rullo	4-6 h	bianco tintegeeabile a tintometro	1 - 2,5 - 10 L
FINITURA							
LOUNGE	INTERNI	pronto all'uso max 5% con acqua	12 m ² lt	pennello spalter, rullo	6-8 h	tinte di cartella	1 - 2,5 L

LOUNGE

ENG

Water based decorative finish for interior. Lounge can easily be applied, it permits to create a delicate pearly and bright effect. Lounge reflects any form of light. Suitable for any kind of setting.

Applications

STEP 1) HOW TO PREPARE SURFACE:

Carefully clean the substrate and apply one coat of **Fissativo 1000 Cod 4050** (dilution 1:10) or **Fissativo Acrilico consolidante Cod 4060** (dilution max 1:1). On different supports (iron-plastic-alloys, etc) apply a coat of **Primer Tech Cod. 8600**.

STEP 2) HOW TO USE DECOBASE:

Max dilution: 10% with water. Carefully clean the substrate and apply one layer with a short hair woollen roller. Approx. coverage 9-10 sq.m./l per layer. After 4-6 hours it can be covered with another layer.

STEP 3) HOW TO USE LOUNGE:

Lounge should be diluted max 5% with water and it can be applied with different tools: brush, short hair roll, depending on the desired effect. After 6-8 hours, apply the second coat with the same methodology as the first.

Technical data sheet

Product	Use	Dilution with water	Approx. Coverage	Tools	Overcoating	Colour	Pack
INTERIOR HOW TO PREPARE SURFACE 1ST STEP							
FISSATIVO 1000	INTERIOR	1:10	10-20 sq.m/l	brush	4-6 h	neutral	1 - 5 - 20 L
OR							
FISSATIVO ACRILICO CONSOLIDANTE	INTERIOR-EXTERIOR	1:1	8-12 sq.m/l	brush	8-12 h	neutral	1 - 5 - 20 L
OR							
PRIMER TECH	different supports (plastic - iron - alloys...)	max 5%	11-13 sq.m/l	brush-roller	24 h	white-grey	2,5 - 0,500 L
HOW TO PREPARE SURFACE 2ND STEP							
DECOBASE	INTERIOR	max 10% water	9-10 sq.m/l	brush-roller	4-6 h	white - tinted with "tintometro"	1 - 2,5 - 10 L
FINISHING							
LOUNGE	INTERIOR	ready to use max water 5%	12 sq.m/l	brush-roller	6-8 h	colour card	1 - 2,5 L

I colori della cartella sono indicativi e possono subire variazioni. Per ulteriori informazioni consultare la scheda tecnica. These hues are for reference only. For further information please read data sheet.



Fabbricato da: G&P Fratelli Tassani S.p.A
Via N.S Della Guardia, 44 - 16162 Genova Bolzaneto
Tel.: +39 010 710715 - Fax: +39 010 710254
www.tassani.it

