

# funky

Protagonisti di stile.





# funky

Protagonisti di stile.





**Funky Tinta Y015**

Applicazione a pennello  
*Brush effect*

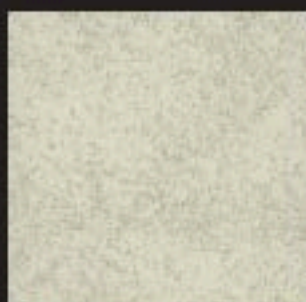


**Funky Tinta Y060**

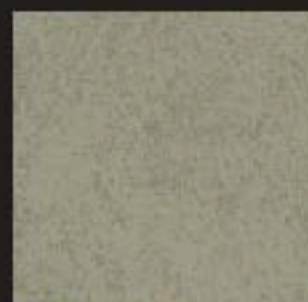
Applicazione a pennello  
*Brush effect*



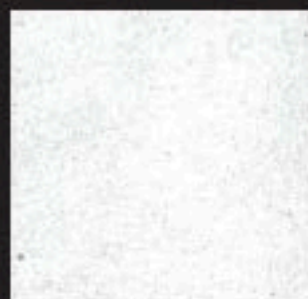
## FUNKY - Protagonisti di stile



codice Y001



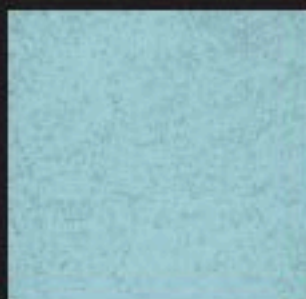
codice Y002



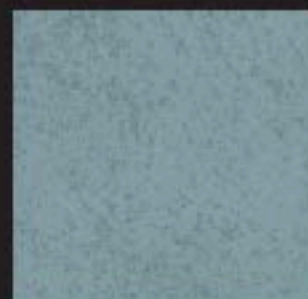
codice Y003



codice Y004



codice Y005\*



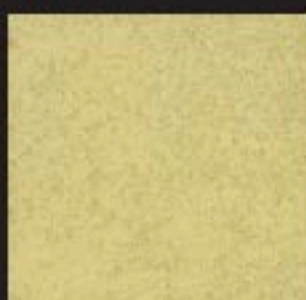
codice Y006\*



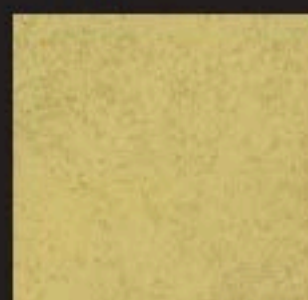
codice Y007



codice Y008



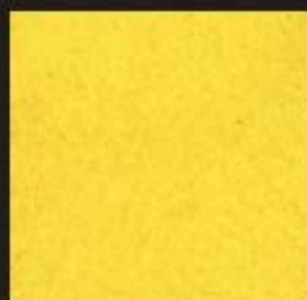
codice Y009



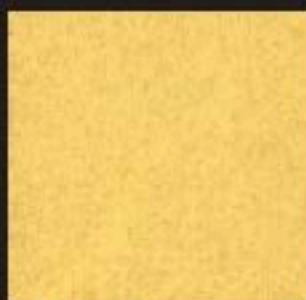
codice Y010



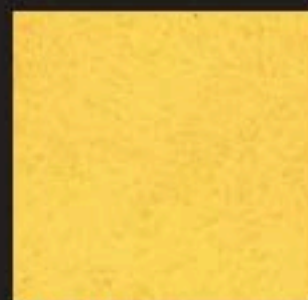
codice Y011\*



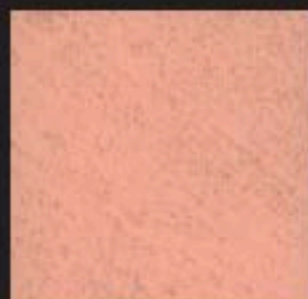
codice Y012\*



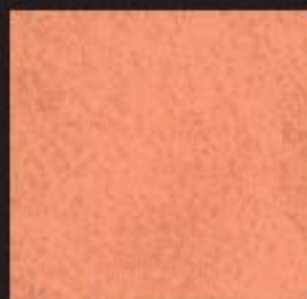
codice Y013



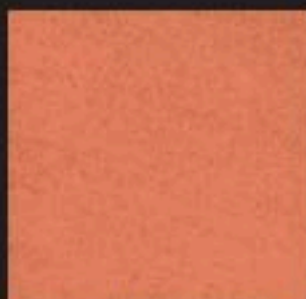
codice Y014\*



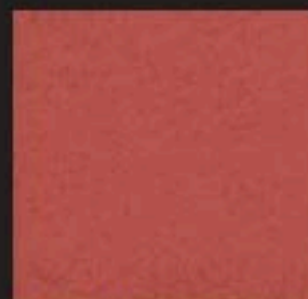
codice Y015



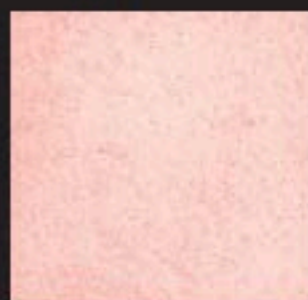
codice Y016\*



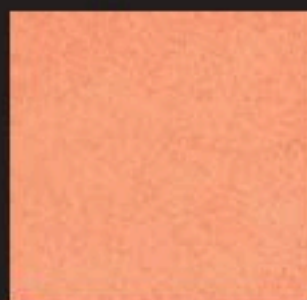
codice Y017\*



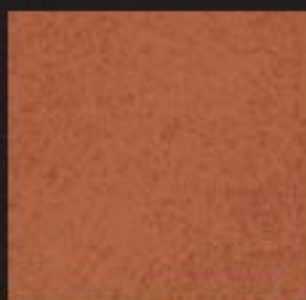
codice Y018\*



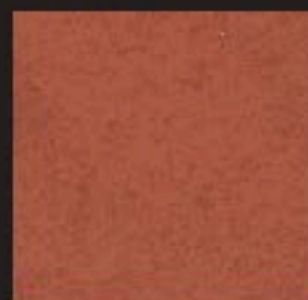
codice Y019\*



codice Y020\*



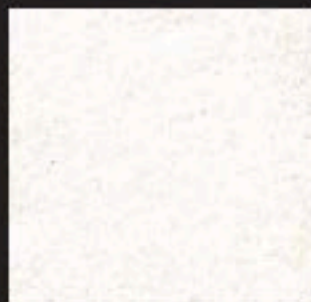
codice Y021



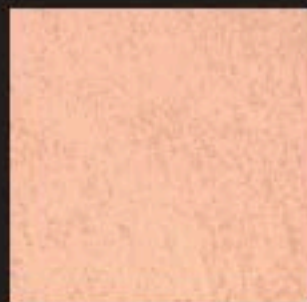
codice Y022



## FUNKY - Protagonisti di stile



codice Y023



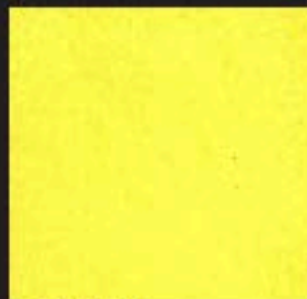
codice Y024



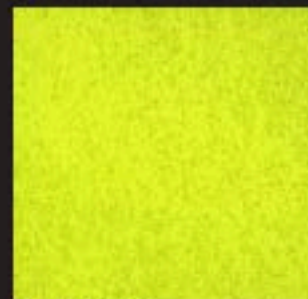
codice Y025\*



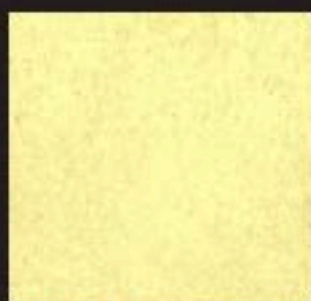
codice Y026\*



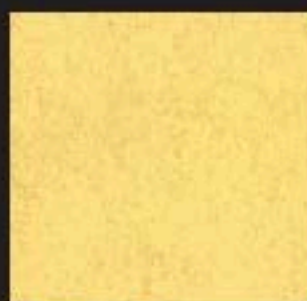
codice Y027\*



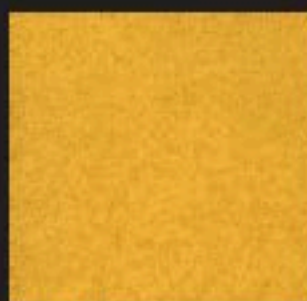
codice Y028\*



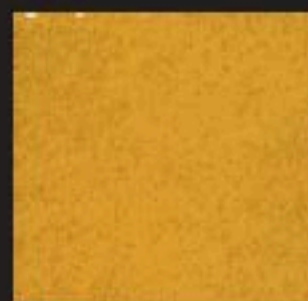
codice Y029



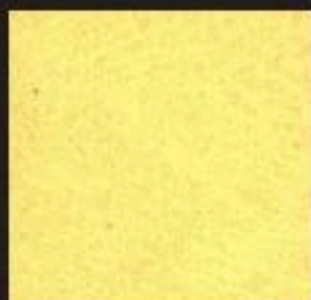
codice Y030



codice Y031\*



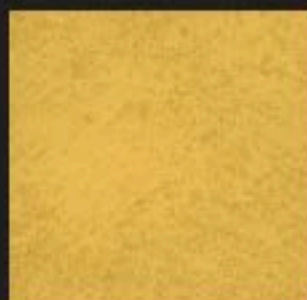
codice Y032\*



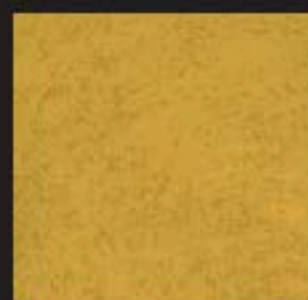
codice Y033\*



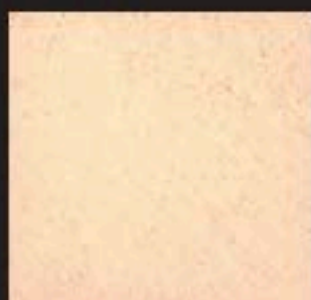
codice Y034



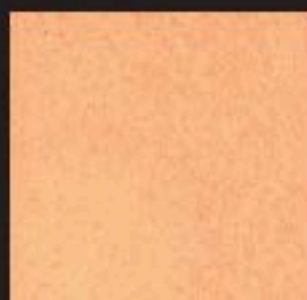
codice Y035



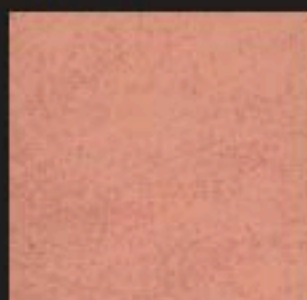
codice Y036



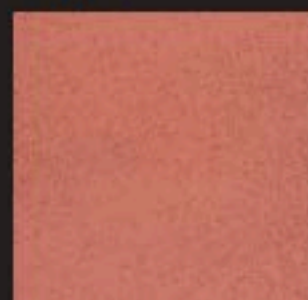
codice Y037\*



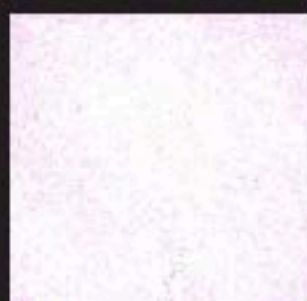
codice Y038\*



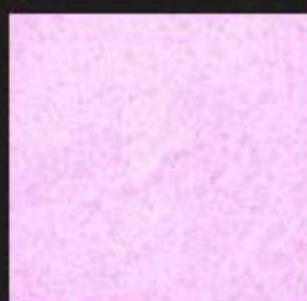
codice Y039



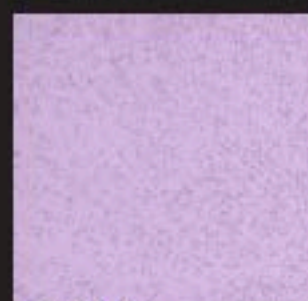
codice Y040



codice Y041\*



codice Y042\*



codice Y043\*

\* Tinte solo per Interni /  
Colours only for Interiors

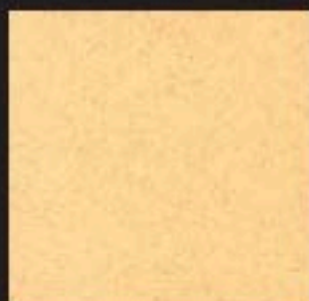
## FUNKY - Protagonisti di stile



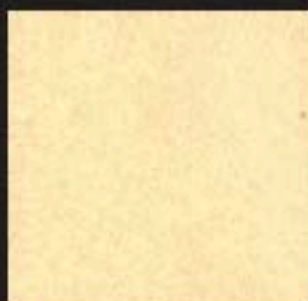
codice Y044



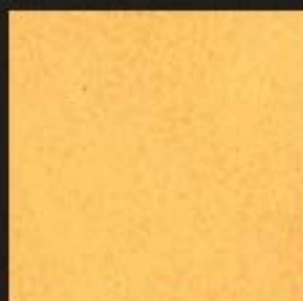
codice Y045



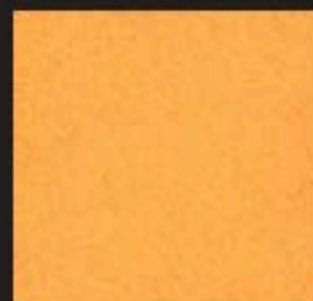
codice Y046



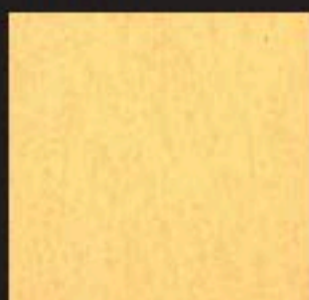
codice Y047



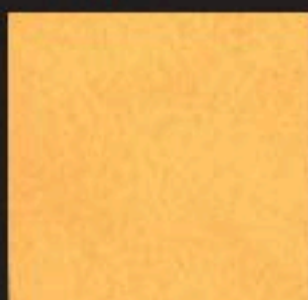
codice Y048\*



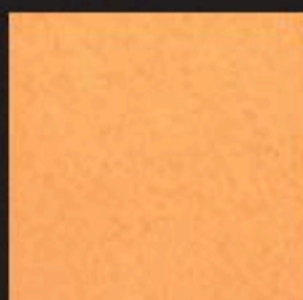
codice Y049\*



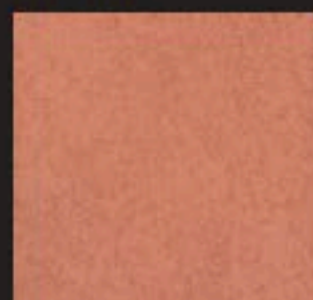
codice Y050\*



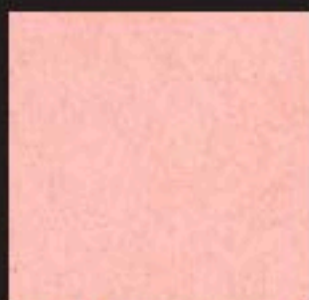
codice Y051\*



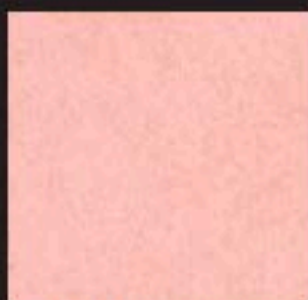
codice Y052\*



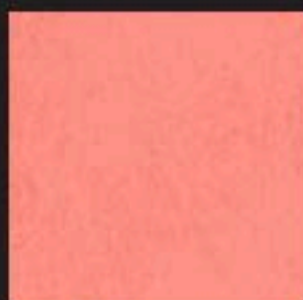
codice Y053



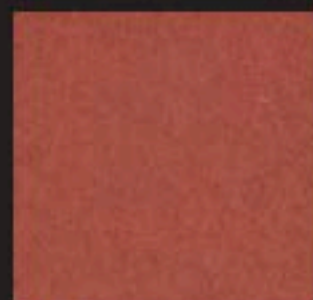
codice Y054\*



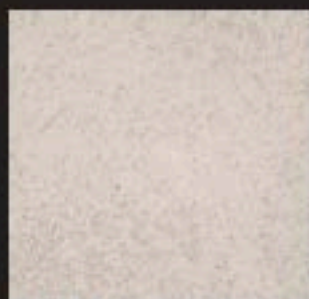
codice Y055\*



codice Y056\*



codice Y057



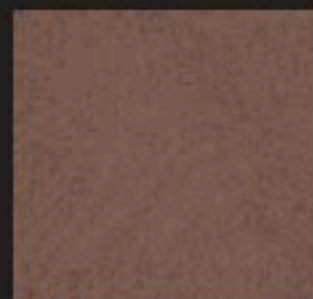
codice Y058



codice Y059



codice Y060



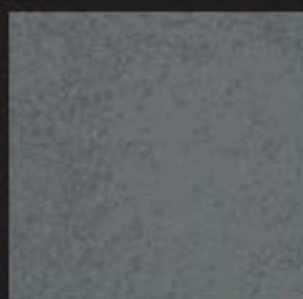
codice Y061



codice Y062



codice Y063

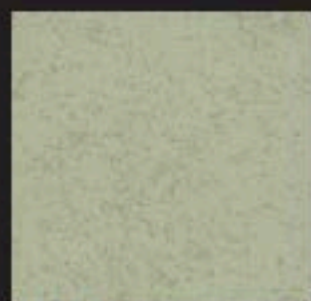


codice Y064

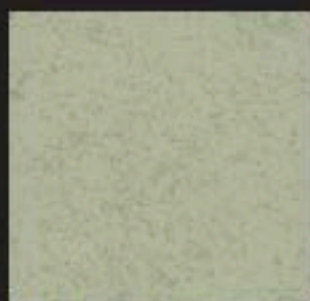
\* Tinte solo per Interni /  
Colours only for Interiors



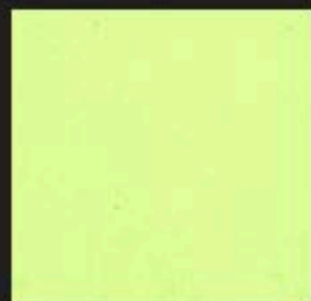
## FUNKY - Protagonisti di stile



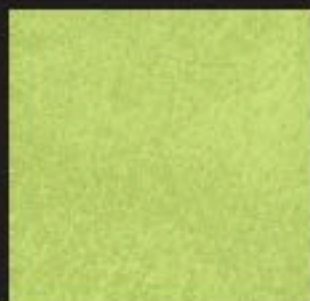
codice Y065



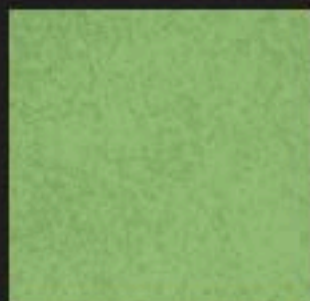
codice Y066



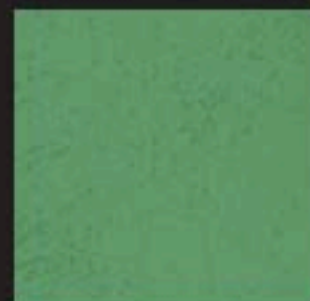
codice Y067\*



codice Y068\*



codice Y069\*



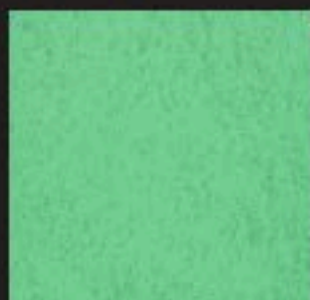
codice Y070\*



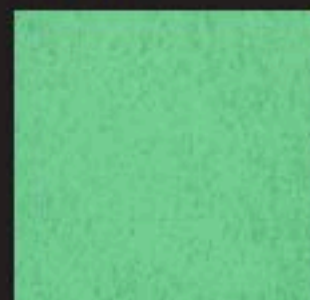
codice Y071\*



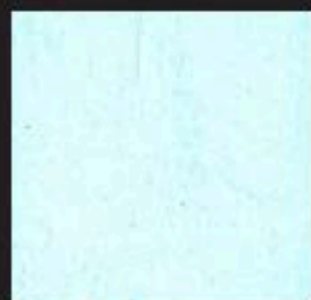
codice Y072\*



codice Y073\*



codice Y074\*



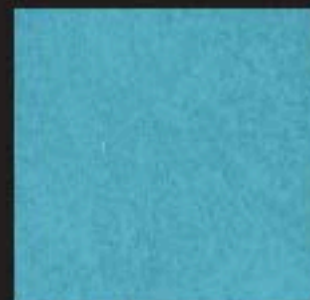
codice Y075



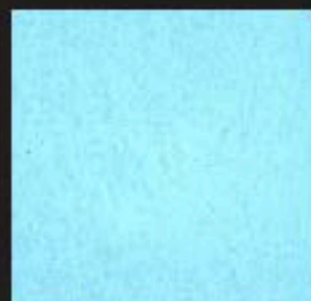
codice Y076\*



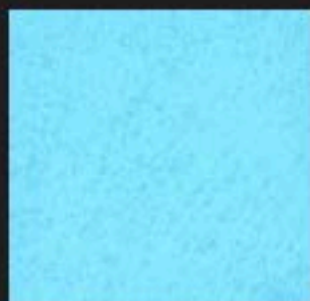
codice Y077



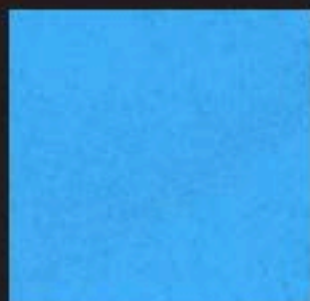
codice Y078



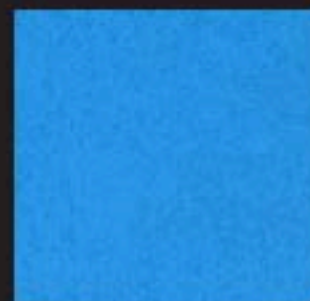
codice Y079



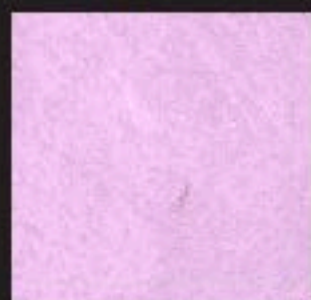
codice Y080



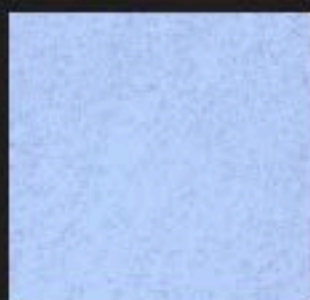
codice Y081



codice Y082



codice Y083\*



codice Y084\*



codice Y085\*



codice Y086\*



Finitura ad acqua ad effetto decorativo, per esterno ed interno, di facile applicazione. Dotata di eccellente adesione e resistenza. Consente di ottenere un'elegante finitura sabbia opaca, cromaticamente disuniforme, che si integra perfettamente nel contesto di edifici storici ma anche in quelli di moderna architettura. La natura silossanica del prodotto garantisce elevata traspirabilità ed eccellente idrorepellenza.

**Ciclo applicativo**

**FASE 1) PREPARAZIONE SUPPORTO:**

**INTERNI:** Al fine di ottenere risultati ottimali è necessario spazzolare le superfici ed applicare una mano di **Fissativo 1000 Cod. 4050** diluito max 1:10 o **Fissativo Acrilico Consolidante Cod. 4060** diluito max 1:1.

**ESTERNI:** Al fine di ottenere risultati ottimali è necessario spazzolare le superfici ed applicare una mano di **Fissativo Pigmentato Polivalente Cod. 4260**, diluito max 40%.

**FASE 2) APPLICAZIONE DECOBASE:**

Applicare una mano con un rullo a pelo corto o pennello. Resa 9-10 m<sup>2</sup>/l per mano. Sovraverniciabile dopo 4-6 ore.

**FASE 3) APPLICAZIONE FUNKY:**

Il prodotto può essere applicato sia con pennello tipo spalter sia con pennellessa, effettuando pennellate corte ed incrociate, cercando di distribuire omogeneamente l'inerte. Dopo aver ricoperto un metro quadro circa ripassare la superficie con il pennello scarico.

**Schema dati tecnici**

Prodotto	Utilizzo	Diluizione con acqua	Resa	Attrezzi	Sovraverniciatura	Colori	Confezioni
<b>INTERNI PREPARAZIONE DEL SUPPORTO FASE 1</b>							
FISSATIVO 1000	INTERNI	1:10	10-20 m <sup>2</sup> lt	pennello	4-6 h	lattiginoso (incolore dopo l'applicazione)	1- 5 - 20 L
<b>OPPURE</b>							
FISSATIVO ACRILICO CONSOLIDANTE	INTERNI	1:1	8-12 m <sup>2</sup> lt	pennello	12-24 h	lattiginoso (incolore dopo l'applicazione)	5 - 20 L
<b>INTERNI PREPARAZIONE DEL SUPPORTO FASE 2</b>							
DECOBASE	INTERNI	max 10% acqua	9-10 m <sup>2</sup> lt	pennello, rullo	4-6 h	bianco tintegeggiabile a tintometro	1 - 2,5 - 10 L
<b>ESTERNI PREPARAZIONE DEL SUPPORTO</b>							
FISSATIVO PIGMENTATO POLIVALENTE	ESTERNI	max 40%	10-12 m <sup>2</sup> lt	pennello, rullo	10-12 h	bianco tintegeggiabile a tintometro	12,5 L
<b>FINITURA</b>							
FUNKY	INTERNI - ESTERNI	pronto all'uso	8 m <sup>2</sup> lt	pennello, spalter, pennellessa	6-8 h	tinte di cartella	1 - 2,5 L

Water based decorative finishing. Funky can be easily applied, having a good washability for interior and exterior application. It can easily cover the surface imperfections. Funky allows to get deco effects similar to sand effects.

**Applications**

**STEP 1) HOW TO PREPARE SURFACE:**

**INSIDE:** Carefully clean the surface and apply one coat of **Fissativo 1000 cod 4050** (dilution 1:10) or **Fissativo Acrilico consolidante cod 4060** (dilution max 1:1).

**OUTSIDE:** Carefully clean the surface and apply one coat of **Fissativo Pigmentato Polivalente cod 4260** (dilution max 40%).

**STEP 2) HOW TO USE DECOBASE:**

Carefully clean the surface and apply one layer with a short hair woollen roller or brush. Approx. coverage 9-10 sq.m./l per layer. After 4-6 hours it can be covered with another layer.

**STEP 3) HOW TO USE FUNKY:**

Apply on 1 sq.m. the product using a "spalter". Dip the brush and apply in crisscross strokes, trying to avoid too well defined areas. Re-passing the already painted area with unloaded roller and from the bottom upwards.

**Technical data sheet**

Product	Use	Dilution with water	Approx. Coverage	Tools	Overcoating	Colour	Pack
<b>INTERIOR HOW TO PREPARE SURFACE 1ST STEP</b>							
FISSATIVO 1000	INTERIOR	1:10	10-20 sq.m/l	brush	4-6 h	neutral	1-5- 20 L
<b>OR</b>							
FISSATIVO ACRILICO CONSOLIDANTE	INTERIOR	1:1	8-12 sq.m/l	brush	12-24 h	neutral	5-20 L
<b>INTERIOR HOW TO PREPARE SURFACE 2ND STEP</b>							
DECOBASE	INTERIOR	max 10%	9-10 sq.m/l	roller, brush	4-6 h	white - tinted with tinting machine	1-2,5-10 L
<b>EXTERIOR HOW TO PREPARE SURFACE</b>							
FISSATIVO PIGMENTATO POLIVALENTE	EXTERIOR	max 40%	10-12 sq.m/l	brush, roller	10-12 h	white - tinted with tinting machine	12,5 L
<b>FINISHING</b>							
FUNKY	INTERIOR-EXTERIOR	ready to use	8 sq.m/l	brush "spalter"	6-8 h	colour card	1- 2,5 L

I colori della cartella sono indicativi e possono subire variazioni. Per ulteriori informazioni consultare la scheda tecnica. These hues are for reference only. For further information please read data sheet.



Fabbricato da: G&P Fratelli Tassani S.p.A  
Via N.S Della Guardia, 44 - 16162 Genova Bolzaneto  
Tel.: +39 010 710715 - Fax: +39 010 710254  
[www.tassani.it](http://www.tassani.it)

